

JUST THE RIGHT INTELLIGENCE
IN JUST THE RIGHT PLACES
EasyIP 4.0 SOLUTION

Distributed by



HIKVISION

Headquarters

No.555 Qianmo Road, Binjiang District,
Hangzhou 310051, China
T +86-571-8807-5998
overseasbusiness@hikvision.com

Hikvision USA
T +1-909-895-0400
sales.usa@hikvision.com

Hikvision Europe
T +31-23-5542770
sales.eu@hikvision.com

Hikvision UK & Ireland
T +01628-902140
sales.uk@hikvision.com

Hikvision UAE
T +971-4-4432090
salesme@hikvision.com

Hikvision Russia
T +7-495-669-67-99
saleru@hikvision.com

Hikvision Australia
T +61-2-8599-4233
salesau@hikvision.com

Hikvision Italy
T +39-0438-6902
info.it@hikvision.com

Hikvision South Africa
Tel: +27 (10) 0351172
sale.africa@hikvision.com

Hikvision Singapore
T +65-6684-4718
sg@hikvision.com

Hikvision Korea
T +82-(0)31-731-8817
sales.korea@hikvision.com

Hikvision India
T +91-22-28469900
sales@pramahikvision.com

Hikvision Brazil
T +55 11 3318-0050
Latam.support@hikvision.com

Hikvision France
T +33(0)1-85-330-450
info.fr@hikvision.com

Hikvision Spain
T +34-91-737-16-55
info.es@hikvision.com

Hikvision Poland
T +48-22-460-01-50
info.pl@hikvision.com

Hikvision Canada
T +1-866-200-6690
sales.canada@hikvision.com

Hikvision Turkey
T +90 (216)521 7070- 7074
sales.tr@hikvision.com

Hikvision Kazakhstan
T +7-727-9730667
nikia.panfilov@hikvision.ru

Hikvision Tashkent
T +99-87-1238-9438
uzb@hikvision.ru

Hikvision Indonesia
T +62-21-2933759
Sales.Indonesia@hikvision.com

Hikvision Thailand
T +662-275-9949
sales.thailand@hikvision.com

Hikvision Malaysia
T +601-7652-2413
sales.my@hikvision.com

Hikvision Vietnam
T +84-974270888
sales.vt@hikvision.com

Hikvision Hong Kong
T +852-2151-1761
info.hk@hikvision.com

Hikvision Colombia
sales.colombia@hikvision.com



Follow us on social media to get the latest product and solution information



Hikvision

HikvisionHQ

HikvisionHQ

Hikvision_Global

Hikvision
Corporate Channel

hikvisionhq

www.hikvision.com

HIKVISION



JUST THE RIGHT INTELLIGENCE
IN JUST THE RIGHT PLACES
EasyIP 4.0 SOLUTION



Video surveillance does not have to be complex. Technological advancements in every corner of our lives is becoming more and more simplified and user-friendly. And it's true in security, too.

What makes the best security system? The right components in the right places. And for the small to medium sized businesses with budget and time restrictions, Hikvision has got the right solution. The EasyIP 4.0 Solution.

For those who know the earlier EasyIP versions, this is the go-to, out-of-the-box system. With new and intelligent features, the EasyIP 4.0 Solution gets more done – and does it smarter.

The EasyIP 4.0 Solution from Hikvision is truly the easier way to better security. Keep reading to see all the benefits EasyIP 4.0 offers.



EasyIP HISTORY

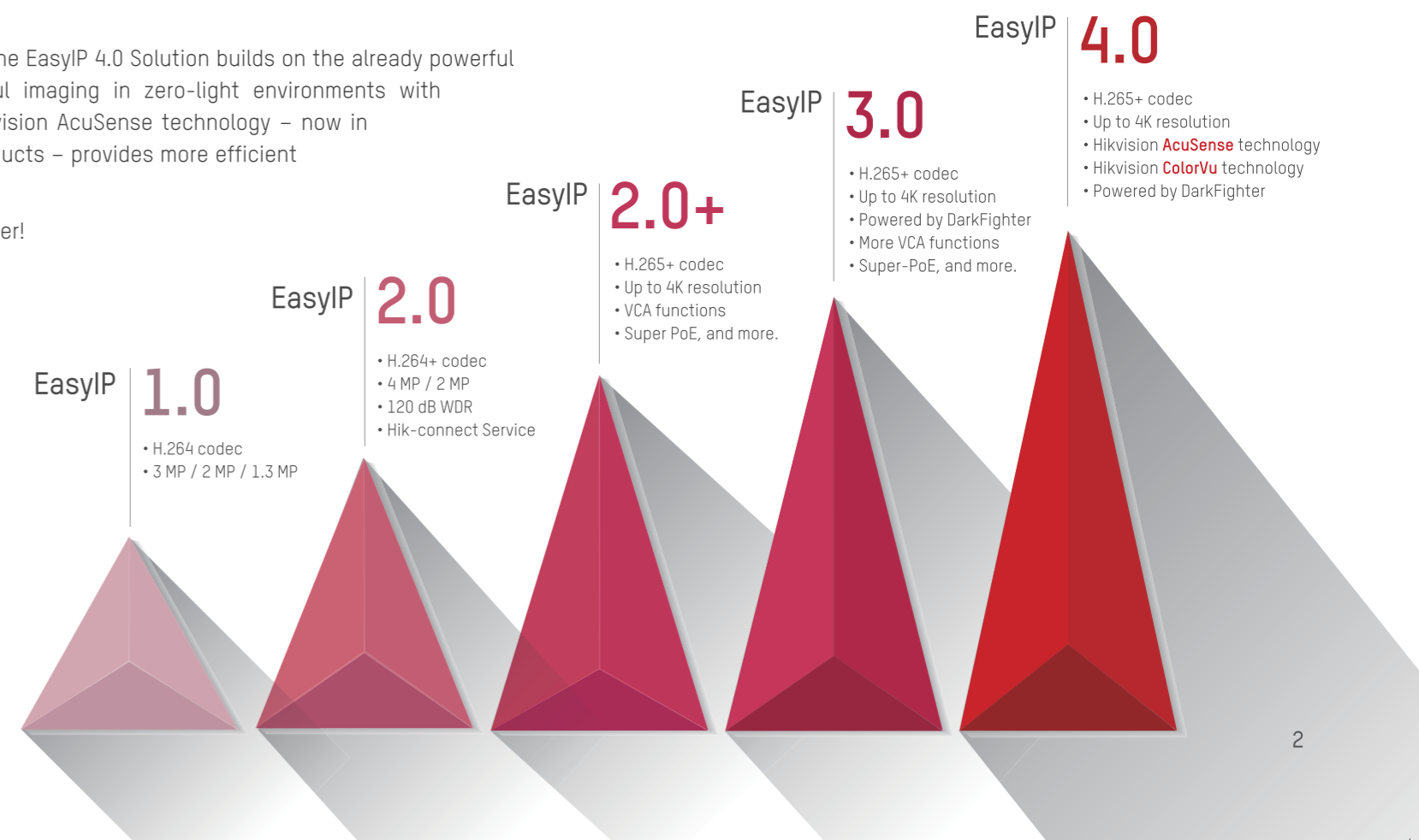
In 2012, Hikvision launched the first iteration of the EasyIP Solution, making a significant impact on the industry. EasyIP 1.0 employed the H.264 codec and offered 1.3, 2, and 3 MP cameras.

Hikvision responded to the increased demand for this renowned solution, applying more advanced technologies in 2014. The result was EasyIP 2.0, utilizing the H.264+ codec, and this time offering 2 and 4 MP cameras. More than that, the 2.0 version carried 120 dB Wide Dynamic Range cameras and Hik-connect Service, opening up new possibilities and extending system management.

In 2017, the EasyIP 3.0 Solution featured the H.265+ codec, maximizing resources and taking video surveillance resolution up to 4K! Sharp, vivid imaging during the day was complemented by powerful DarkFighter technology at night. What's more, the 3.0 version provided more VCA functions, extended power-over-Ethernet functionality, and more.

But Hikvision did not stop there. The EasyIP 4.0 Solution builds on the already powerful functions, now achieving colorful imaging in zero-light environments with Hikvision ColorVu technology. Hikvision AcuSense technology – now in both front-end and back-end products – provides more efficient security management.

The best SMB solution just got better!





Hikvision AcuSense Technology

Based on deep learning algorithms, Hikvision AcuSense technology can now perform target classification. This technology immensely increases the alarm accuracy rate and brings a more convenient and effective way to search through video clips.



Hikvision ColorVu Technology

With Hikvision ColorVu technology, zero-light environments are no longer a problem for security. Better lenses, more advanced sensors, and soft supplemental lighting come together to take image quality, even in total darkness, to a new level.

OTHER FEATURES

- H.265+ codec
- 120 dB WDR
- Powered by DarkFighter





HIKVISION AcuSense TECHNOLOGY

False Alarms

People and vehicle intrusions are the most common concerns in perimeter protection. However, conventional security surveillance systems lack the ability to classify object types, resulting in endless false alarms.



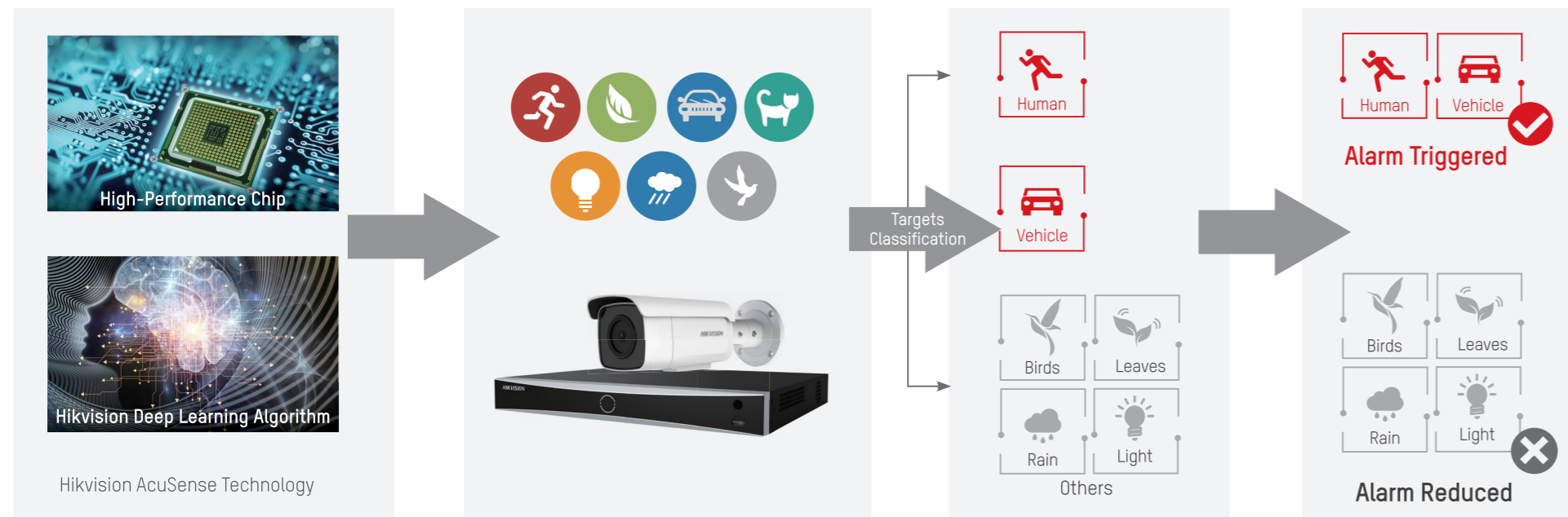
False alarms caused by different objects

 <p>Unnecessary Information Users receive too much irrelevant information</p>	 <p>Low Alarm Effectiveness False alarms cause low alarm effectiveness</p>	 <p>High Labor Costs Extra costs accrue when users have to double-check each alarm</p>	 <p>Low User Satisfaction Room to improve user experience with fewer false alarms remains</p>
-------------------------------------------------------------------------------------------------------------------------------------------------------------------------------	----------------------------------------------------------------------------------------------------------------------------------------------------------------------------	----------------------------------------------------------------------------------------------------------------------------------------------------------------------------------------	-----------------------------------------------------------------------------------------------------------------------------------------------------------------------------------------------

Problems associated with too many false alarms

False Alarm Reduction

Empowered by deep learning algorithms, Hikvision AcuSense technology brings precise target classification to front- and back-end devices. The system can greatly reduce false alarms generated by targets other than humans or vehicles, vastly improving alarm efficiency and effectiveness, as well as reducing labor costs. Notifications to the VMS or app can be disabled for events caused by other target types. These events, however, are sent to the NVR for double-checking.



False alarm reduction based on Hikvision AcuSense technology

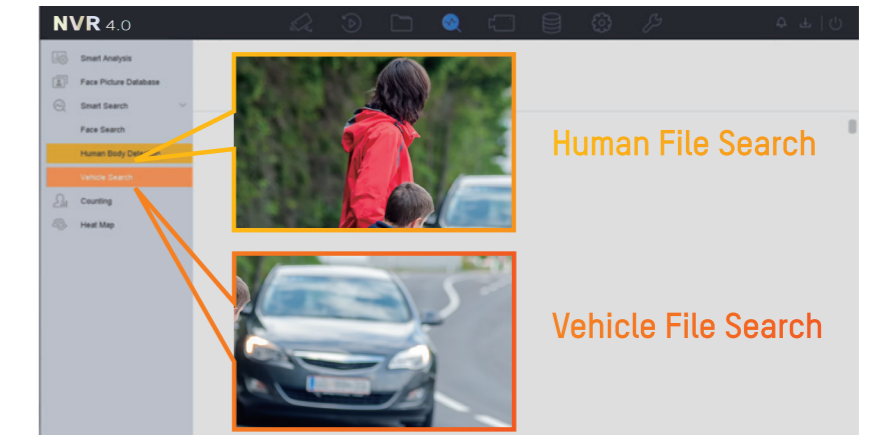
Quick Target Search



Before

Browse large amounts of files to find the one you need

Without quick target searches, finding video clips related to specific persons or vehicles is both time-consuming and unproductive.



Now

More efficient and effective file searching using human and vehicle classification

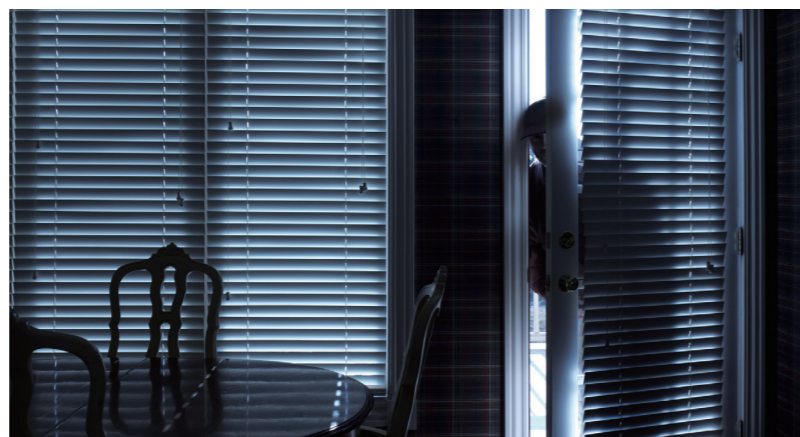
Select Hikvision NVRs can quickly retrieve all video clips with humans or vehicles from stored videos. Refer to the NVR specifications for details.

Strobe Light and Audio Alarm



Ward off potential intruders by combining alarms with flashing light

IP cameras equipped with Hikvision AcuSense technology now have the ability to identify and classify objects into three categories: human, vehicle, and other. In perimeter protection, when cameras classify a moving object as human, they trigger an alarm and flashing light to ward off intruders.



Capture facial information of intruders

Cameras with strobe light and audio alarm provide better opportunities to capture facial information of intruders because people are inclined to turn to the source of sudden lights and sounds.

**Only select Hikvision AcuSense cameras support this function.*

Application Scenarios



Warehouses



Critical Infrastructure



Borders



Residential Areas



Parking Areas



Campuses

HIKVISION ColorVu TECHNOLOGY

24/7 Colorful Imaging

Darkness provides cover for theft, trespassing, and other crimes. When incidents occur at night, dim low-quality images of conventional cameras miss or lose critical details. Infrared LEDs provide extra light for clearer imaging. The images, however, are black-and-white.

Imagine capturing vivid, colorful details, in total darkness – such as on clothing or a car... Hikvision ColorVu Technology is the answer.



Hikvision ColorVu Camera

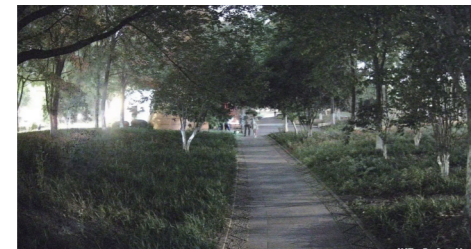


Traditional Camera

Supplemental Light Off



Conventional 4 MP Camera
(IR LED off)

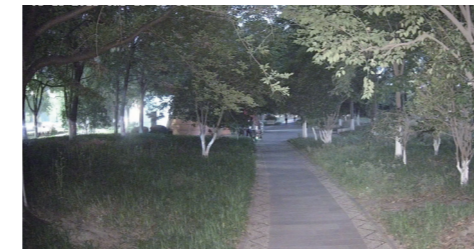


4 MP Hikvision ColorVu Camera
(Warm-light LED off)

Supplemental Light On



Conventional 4 MP Camera
(IR LED on)



4 MP Hikvision ColorVu Camera
(Warm-light LED on)

Bright and Colorful Imaging



Large Apertures

F1.0 Super-aperture collects more light to produce brighter images



Conventional Cameras



Hikvision ColorVu Cameras

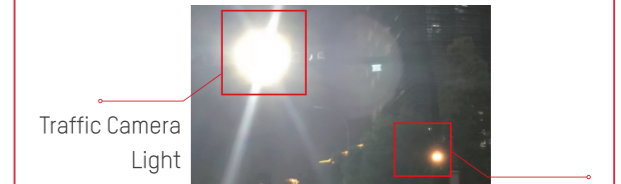
4X amount of light of conventional cameras

Advanced Sensors

The 4 MP 1/1.8" advanced sensor is further enhanced with the Backside Illumination (BSI), Dual Conversion Gain (DCG) and Wide Dynamic Range (WDR) technologies to ensure bright and colorful imaging in virtually all lighting conditions.

Non-Dazzling Lighting

Built-in, environmentally-friendly, soft and warm supplemental lighting works to guarantee colorful images, even in complete darkness. The luminance is adjustable on a scale of 0-100.



Traffic Camera Light

Warm-light Hikvision ColorVu Camera

PRODUCT SHOWCASE

Hikvision AcuSense Cameras

False alarm reduction by human and vehicle target classification based on deep learning



DS-2CD214661-I(S)
Network Dome
Camera

- 4 MP resolution
- 2.8/4/6 mm fixed lens, optional
- Powered by DarkFighter
- H.265+/H.265
- IP67, IK10
- 120 dB WDR



DS-2CD212661-I(S)
Network Dome
Camera

- 2 MP resolution
- 2.8/4/6 mm fixed lens, optional
- Powered by DarkFighter
- H.265+/H.265
- IP67, IK10
- 120 dB WDR



DS-2CD234661-I
Network Turret
Camera

- 4 MP resolution
- 2.8/4/6 mm fixed lens, optional
- Powered by DarkFighter
- H.265+/H.265
- IP67
- 120 dB WDR



DS-2CD232661-I
Network Turret
Camera

- 2 MP resolution
- 2.8/4/6 mm fixed lens, optional
- Powered by DarkFighter
- H.265+/H.265
- IP67
- 120 dB WDR



DS-2CD274661-IZ(S)
Network Dome
Camera

- 4 MP resolution
- 2.8-12 mm VF lens
- Powered by DarkFighter
- H.265+/H.265
- IP67, IK10
- 120 dB WDR



DS-2CD272661-IZ(S)
Network Dome
Camera

- 2 MP resolution
- 2.8-12 mm VF lens
- Powered by DarkFighter
- H.265+/H.265
- IP67, IK10
- 120 dB WDR



DS-2CD2T4661-2I/4I
Network Bullet
Camera

- 4 MP resolution
- 2.8/4/6/8 mm fixed lens, optional
- Powered by DarkFighter
- H.265+/H.265
- IP67
- 120 dB WDR



DS-2CD2T2661-2I/4I
Network Bullet
Camera

- 2 MP resolution
- 2.8/4/6/8 mm fixed lens, optional
- Powered by DarkFighter
- H.265+/H.265
- IP67
- 120 dB WDR



DS-2CD264661-IZ(S)
Network Bullet
Camera

- 4 MP resolution
- 2.8-12 mm VF lens
- Powered by DarkFighter
- H.265+/H.265
- IP67, IK10
- 120 dB WDR



DS-2CD262661-IZ(S)
Network Bullet
Camera

- 2 MP resolution
- 2.8-12 mm VF lens
- Powered by DarkFighter
- H.265+/H.265
- IP67, IK10
- 120 dB WDR



DS-2CD234661-I/SL
Network Turret
Camera

- 4 MP resolution
- 2.8/4/6 mm fixed lens, optional
- Powered by DarkFighter
- H.265+/H.265
- 120 dB WDR
- Strobe light and audio alarm



DS-2CD232661-I/SL
Network Turret
Camera

- 2 MP resolution
- 2.8/4/6 mm fixed lens, optional
- Powered by DarkFighter
- H.265+/H.265
- 120 dB WDR
- Strobe light and audio alarm



DS-2CD2T4661-4I/SL
Network Bullet
Camera

- 4 MP resolution
- 2.8/4/6 mm fixed lens, optional
- Powered by DarkFighter
- H.265+/H.265
- IP66
- 120 dB WDR
- Strobe light and audio alarm



DS-2CD2T2661-4I/SL
Network Bullet
Camera

- 2 MP resolution
- 2.8/4/6 mm fixed lens, optional
- Powered by DarkFighter
- H.265+/H.265
- IP66
- 120 dB WDR
- Strobe light and audio alarm

PRODUCT SHOWCASE

Hikvision ColorVu Cameras



DS-2CD234761-L(U)
Network Turret
Camera

- 4 MP resolution
- 4/6 mm fixed lens, optional
- 24/7 colorful imaging
- H.265+/H.265
- IP67
- 120 dB WDR



DS-2CD232761-L(U)
Network Turret
Camera

- 2 MP resolution
- 4/6 mm fixed lens, optional
- 24/7 colorful imaging
- H.265+/H.265
- IP67
- 120 dB WDR



DS-2CD2T4761-L
Network Bullet
Camera

- 4 MP resolution
- 4/6 mm fixed lens, optional
- 24/7 colorful imaging
- H.265+/H.265
- IP67
- 120 dB WDR



DS-2CD2T2761-L
Network Bullet
Camera

- 2 MP resolution
- 4/6 mm fixed lens, optional
- 24/7 colorful imaging
- H.265+/H.265
- IP67
- 120 dB WDR

Hikvision AcuSense NVRs



DS-7608NXI-I2(/8P)/4S
2 HDD NVR

- Up to 8-ch IP cameras for access.
- False alarm reduction for 4-ch behavior (line crossing and intrusion) detection for 2 MP, 3 MP, 4 MP and 8MP network camera
- Support quick target search
- H.265/H.265+/H.264/H.264+/MPEG4 supported decoding formats.
- 80 Mbps/256 Mbps for incoming/outgoing bandwidth
- 12-ch 1080p decoding
- 1 HDMI, 1 VGA and 1 CVBS output
- Optional 8 PoE ports, with /8P model
- 1U chassis



DS-7616NXI-I2(/16P)/4S
2 HDD NVR

- Up to 16-ch IP cameras for access.
- False alarm reduction for 4-ch behavior (line crossing and intrusion) detection for 2 MP, 3 MP, 4 MP and 8MP network camera
- Support quick target search
- H.265/H.265+/H.264/H.264+/MPEG4 supported decoding formats.
- 160 Mbps/256 Mbps for incoming/outgoing bandwidth
- 12-ch 1080p decoding
- 1 HDMI, 1 VGA and 1 CVBS output
- Optional 16 PoE ports, with /16P model
- 1U chassis



DS-7716NXI-I4(/16P)/4S
4 HDD NVR

- Up to 16-ch IP cameras for access.
- False alarm reduction for 4-ch behavior (line crossing and intrusion) detection for 2 MP, 3 MP, 4 MP and 8MP network camera
- Support quick target search
- H.265/H.265+/H.264/H.264+/MPEG4 supported decoding formats.
- 256 Mbps/200 Mbps for incoming/outgoing bandwidth
- 12-ch 1080p decoding
- 2 HDMI, 1 VGA and 1 CVBS output
- eSATA by default.
- Optional 16 PoE ports, with /16P model
- 1.5U chassis



DS-7732NXI-I4(/16P)/4S
4 HDD NVR

- Up to 32-ch IP cameras for access.
- False alarm reduction for 4-ch behavior (line crossing and intrusion) detection for 2 MP, 3 MP, 4 MP and 8MP network camera
- Support quick target search
- H.265/H.265+/H.264/H.264+/MPEG4 supported decoding formats.
- 256 Mbps/200 Mbps for incoming/outgoing bandwidth
- 12-ch 1080p decoding
- 2 HDMI, 1 VGA and 1 CVBS output
- Optional 16 PoE ports, with /16P model
- 1.5U chassis

ACCESSORIES

DS-2CD26X6G1 DS-2CD2TX6G1	DS-1276ZJ-SUS Corner Mount	DS-1260ZJ Junction Box	DS-1280ZJ-S Junction Box	DS-1275ZJ-S-SUS Vertical Pole Mount

DS-2CD27X6	DS-1471ZJ-155 Pendant Mount	DS-1473ZJ-155 Wall Mount	DS-1475ZJ-SUS Vertical pole mount	DS-1476ZJ-SUS Corner mount	DS-1280ZJ-DM55 Junction Box

DS-2CD23X6G1 DS-2CD23X7G1	DS-1273ZJ-140 Wall Mount	DS-1271ZJ-140 Pendant Mount	DS-1280ZJ-DM21 Junction Box

DS-2CD21X6G1	DS-1272ZJ-120 Wall Mount	DS-1276ZJ-SUS Corner Mount	DS-1271ZJ-120 Pendant Mount